

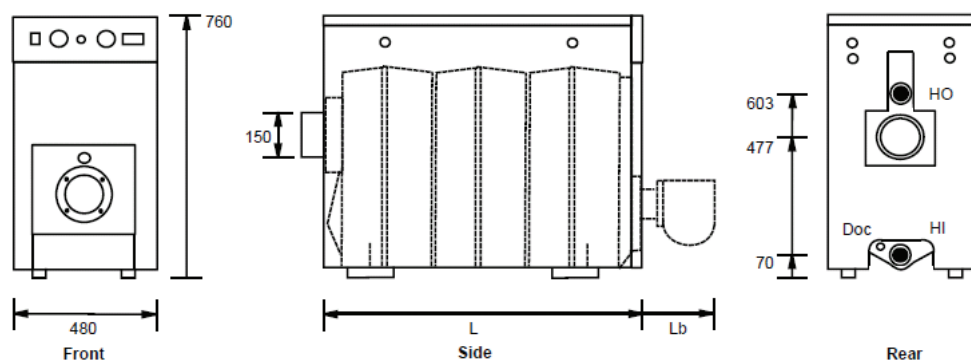
# TORRENT<sup>®</sup>

B O I L E R S



## b. Technical Data and Dimensions

Series / Types	SN 2	SN 3	SN 4	SN 5	SN 6	SN 7
Elements	2	3	4	5	6	7
Nominal Power Output (Kcal)	21.686	31.500	41.258	51.200	61.100	69.825
Nominal Power Output (KW)	25,22	36,63	47,98	59,55	71,06	81,21
Input Power (Kcal)	24.755	35.836	46.777	58.115	69.431	49.436
Input Power (KW)	28,79	41,68	54,40	67,59	80,75	92,39
Efficiency (%)	87,6	87,9	88,2	88,1	88,0	87,9
Oil Consumption (kg/h)	2,418	3,500	4,569	5,677	6,782	7,759
Natural Gas Consumption (m <sup>3</sup> /h)	2,88	4,17	5,44	6,76	8,07	9,24
Combustion Chamber Pressure (mmH <sub>2</sub> O)	2	4	6	6,5	7,5	8,8
Combustion Chamber Volume (lt)	13,5	19,7	25,8	40,0	46,1	52,3
Water Capacity (lt)	9,0	12,3	16,0	19,5	23,0	25,5
Weight (Kg)	112	141	170	199	226	256
Hot/Cold Water Pipe Diameter (inch)	1 1/2"					
Exhaust Pipe (mm)	150	150	150	150	150	150



Series / Types	SN 2	SN 3	SN 4	SN 5	SN 6	SN 7
Jacket Length L (mm)	355	455	555	655	755	855
Flue Gas Exit Diameter F (mm)	150	150	150	150	150	150