

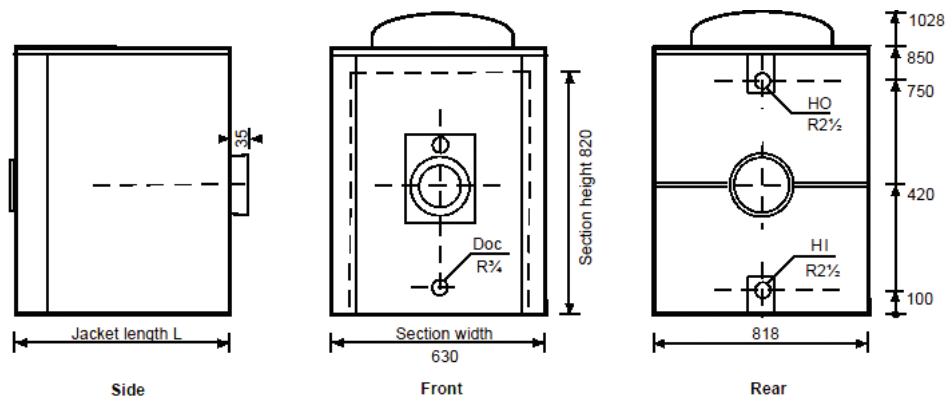
TORRENT®

B O I L E R S



b. Technical Data and Dimensions

Series / Types	STAR 6	STAR 7	STAR 8	STAR 9	STAR 10	STAR 11
Elements	6	7	8	9	10	11
Nominal Power Output (Kcal/h)	187.000	238.000	289.000	345.000	390.000	430.000
Nominal Power Output (KW)	217,44	276,84	336,04	401,484	453,48	500,00
Input Power (Kcal/h)	208.892	262.925	320.152	379.036	430.801	473.719
Input Power (KW)	242,90	305,80	372,30	440,80	501,00	550,90
Efficiency (%)	89,50	90,50	90,30	91,00	90,50	90,80
Oil Consumption (kg/h)	20,408	25,78	31,245	37,27	42,36	46,58
Natural Gas Consumption (m ³ /h)	24,37	30,67	37,35	44,22	50,25	55,26
Combustion Chamber Pressure (mmH ₂ O)	7,9	12,2	17,1	23,2	29,2	35,7
Flue Gas ΔT (Water temperature 80°C)	215	210	200	197	195	180
Water Capacity (lt)	73,0	85,0	97,0	109,0	121,0	138,0
Weight (Kg)	726	832	931	1.029	1.127	1.225
Hot/Cold Water Pipe Diameter (inch)	2 1/2"					
Exhaust Pipe (mm)	250	250	250	250	250	250



Series / Types	STAR 6	STAR 7	STAR 8	STAR 9	STAR 10	STAR 11
Jacket Length L (mm)	998	1131	1264	1397	1530	1663
Flue Gas Exit Diameter F (mm)	250	250	250	250	250	250