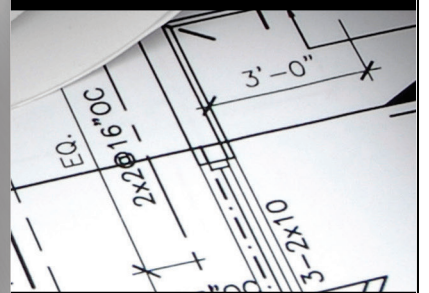
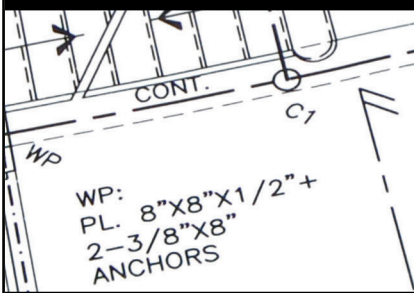


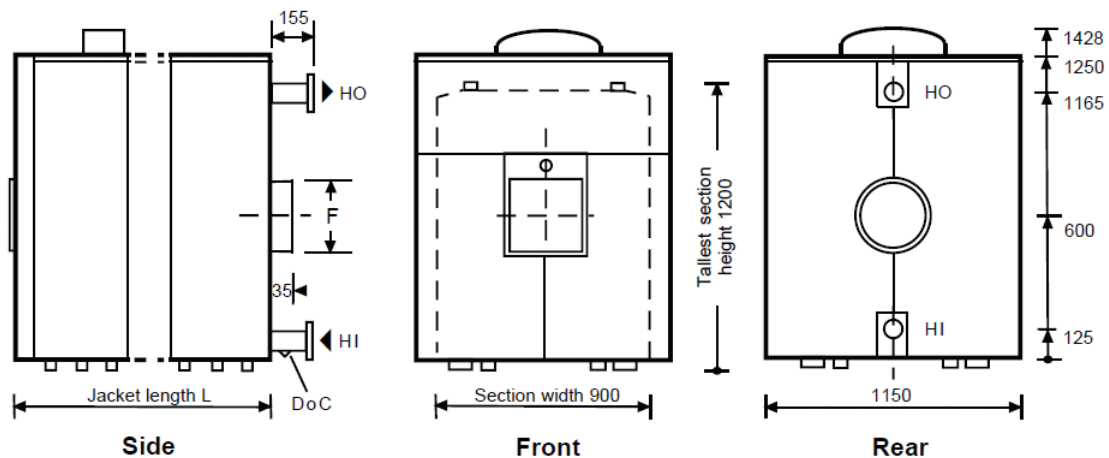
TORRENT[®]

B O I L E R S



b. Technical Data and Dimensions

Series / Types	MS 7	MS 8	MS 9	MS 10	MS 11	MS 12	MS 13	MS 14	MS 15	MS 16
Elements	7	8	9	10	11	12	13	14	15	16
Nominal Power Output (Kcal/h)	431.300	515.900	593.300	670.700	748.100	825.500	911.400	997.400	1.100,602	1.203,783
Nominal Power Output (KW)	501,6	600,0	690,0	780,0	870,0	960,0	1.060,0	1.160,0	1.280,0	1.400,0
Input Power (Kcal/h)	482.425	573.222	657.761	742.746	826.630	911.148	1.004,851	1.099,669	1.213,413	1.327,170
Input Power (KW)	561,06	666,70	765,00	863,80	961,40	1.059,7	1.168,6	1.278,9	1.411,2	1.543,5
Efficiency (%)	89,40	90,00	90,20	90,30	90,50	90,60	90,70	90,70	90,70	90,70
Oil Consumption (kg/h)	47,121	56,360	64,680	73,030	81,280	89,590	98,800	108,130	-	-
Natural Gas Consumption (m ³ /h)	56,10	67,09	77,00	86,94	96,76	106,65	117,62	128,72	139,70	152,80
Flue Gas ΔT (Water temperature 80°C)	215,8	209,0	205,0	202,0	199,0	196,0	196,0	195,0	205,0	205,0
Combustion Chamber Pressure (mmH ₂ O)	8,0	15,0	30,0	33,0	42,0	51,0	60,0	69,0	80,0	93,0
Combustion Chamber Volume (lt)	320	370	420	470	520	570	620	670	720	770
Water Capacity (lt)	305,0	350,0	395,0	440,0	485,0	530,0	575,0	620,0	665,0	710,0
Weight (Kg)	2.015	2.260	2.510	2.715	2.960	3.210	3.450	3.695	3.940	4.185
Hot/Cold Water Pipe Diameter (inch)	DN 100									
Exhaust Pipe (mm)	350	350	350	350	400	400	400	400	400	400



Series / Types	MS 7	MS 8	MS 9	MS 10	MS 11	MS 12	MS 13	MS 14	MS 15	MS 16
Jacket Length L (mm)	1440	1620	1800	1980	2160	2340	2520	2700	2880	3060
Flue Gas Exit Diameter F (mm)	350	350	350	350	400	400	400	400	400	400